

NACHW
NATIONAL ASSOCIATION OF
COMMUNITY HEALTH WORKERS

Community Health
Workers united
nationally to support
communities in
achieving health,
equity and social
justice.



NACHW
NATIONAL ASSOCIATION OF
COMMUNITY HEALTH WORKERS

ABOUT NACHW

The National Association of Community Health Workers (NACHW) was founded in April 2019 after several years of planning and organizing by Community Health Workers (CHWs) and allies across the United States.

VISION : Community Health Workers united nationally to support communities in achieving health, equity and social justice.

AMPLIFY

The unique identities, qualities, competencies, expertise and voice of CHWs

ARTICULATE

The past, present and future impact of CHWs on health, wellbeing and social justice

ALLY

With individuals and organizations who share our values and support our strategic priorities

ADVANCE

Innovations in CHW research, workforce development, integration and career pathways

ADVOCATE

For sustainable and equitable policies and funding for authentic CHWs and their Networks

ACTIVATE

CHW leadership, capacity and vision

NACHW BOARD OF DIRECTORS

Joanne Calista, MA

Teresa Campos-Dominguz, OR*

Amber Culver, NH*

Atara Estes, MO*

Lillie Fox, SC* *Board President*

Ricardo Garay, TX*

Claudia Hartz, HI*

Anna Huff Davis, AR*

Ben Hummel, ME

Kim Jay, IL*

Luis Lagos, VA*

Lily Lee, CA

Paige Menking, NM

Yanelle Powell, DE*

Iris Reano, NM*

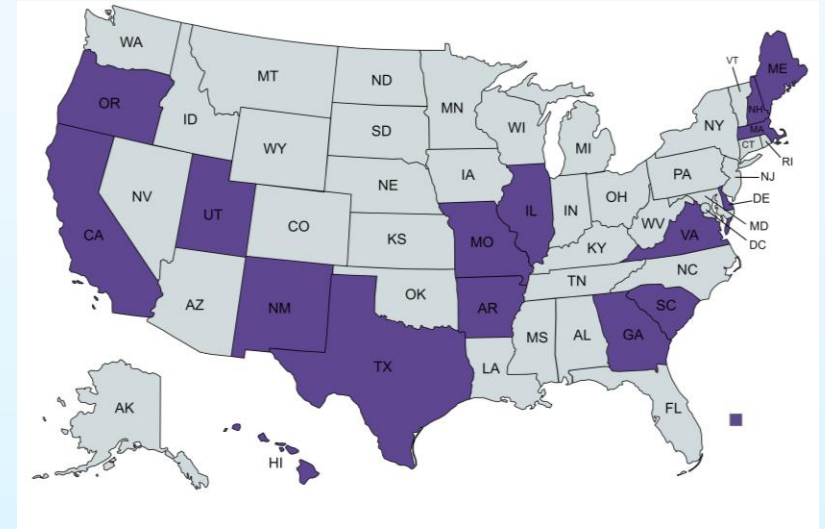
Betsy Rodriguez, GA*

Sara Selig, MA

Treva Smith, MO*

Julie St. John, TX

Oreta Tupola, UT*



Our board members are diverse in languages spoken, race and ethnicity, and geography

****Board member is a CHW.***



**NACHW
Resources and
Projects**

SIX PILLARS OF THE CHW PROFESSION

A Unique Field

CHWs are a one-of-a-kind group of public health workers. As a profession they have designated workforce classifications with multiple government organizations. With a unique set of core competencies, CHWs are an underappreciated yet crucial workforce that promote social justice and help to achieve health equity and wellbeing for all.



Community-based

CHWs build relationships with those around them and build treatment capacity to bolster their local communities. Trust, respect, dignity, community advocacy — these values and more drive CHWs in their mission to alleviate the social determinants of health and achieve equity.



Historic and Diverse

The history of CHWs goes back centuries — the first were tribal healers. Today CHWs are known by many different names, such as promotoras, peers, and aunties. As a reflection of the country they call home, they are diverse in ethnicity, language, and culture — and have similar lived experiences as their ancestors.



Cross-sector Workers

CHWs reduce barriers to healthcare and build capacity in underserved areas. The social determinants of health are of particular interest to them — they embrace a holistic health philosophy that considers societal factors, and establish networks to leverage their collective strength in their mission to achieve true health equity.



A Proven Workforce

CHWs have proven how integral they are to clinical, public health, and social systems. 60 years worth of study and research have shown just how important they are in various fields, including maternal and child health, chronic disease interventions, immunization, and many other disciplines.



...And a Precarious One

As a majority female workforce, CHWs face challenges like low pay and discrimination. Work exposes them to possible violence and disease. A lack of identity and poor legislative protections only exacerbate these issues. Given the field's issues, it's not surprising that the CHW profession lacks sustainability in recruitment and retention.



CHWS BUILD A NATIONAL POLICY PLATFORM

“Despite nearly 60 years of research on Community Health Workers (CHW) effectiveness, two decades of public health recognition, landmark workforce development studies, and a national labor classification, CHWs face national professional identity, policy and organizational capacity barriers.” - NACHW

Read more and find policy in [English](#) and [Spanish](#)

NACHW | LEADERS IN
NATIONAL ASSOCIATION OF COMMUNITY HEALTH WORKERS | COMMUNITY HEALTH

The National Association of Community Health Workers Calls on Public and Private Institutions to Respect, Protect, and Partner with Community Health Workers to Ensure Equity During the Pandemic and Beyond

COMMUNITY HEALTH WORKERS ARE NEEDED MORE THAN EVER TO STRENGTHEN COVID-19 RESPONSE

During the COVID-19 pandemic, [global health leaders](#), [health providers](#), [legislators](#), [policy makers](#) and [funders](#) have called for the rapid scale up and integration of Community Health Workers (CHWs include promotores and community health representatives and over 50 other work titles) to strengthen public health and local and state COVID response plans. On March 19, 2020, the U.S. Department of Homeland Security Cybersecurity and Infrastructure Security Agency (CISA) demonstrated the urgency to engage CHWs in a pandemic when it issued guidance to states, tribes and territories that classified CHWs as [essential critical infrastructure workers](#) during COVID-19.

WHY AREN'T MORE COMMUNITY HEALTH WORKERS INTEGRATED INTO COVID-19 RESPONSE?

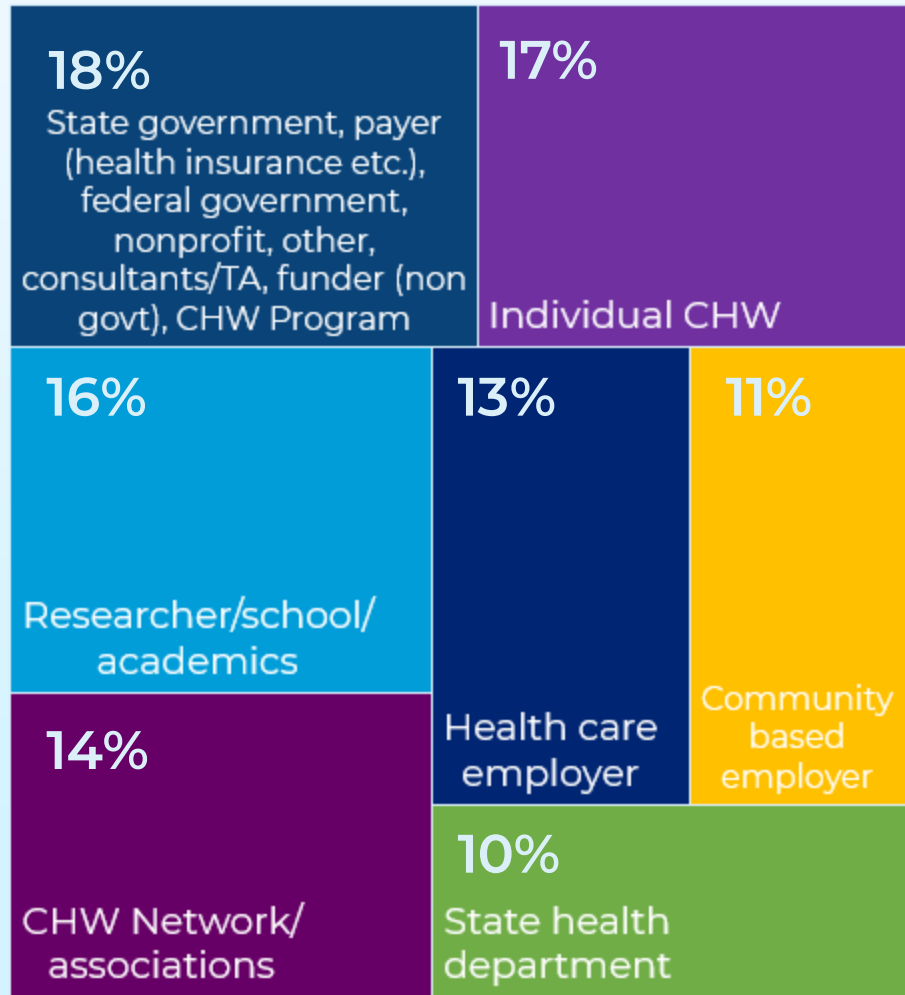
Many U.S. COVID-19 response efforts lack robust and authentic CHW integration into their response efforts in their fullest capacity. For example, pandemic planning groups and task forces who are actively recruiting CHW expertise and participation, are often disparate in their implementation of best practices in CHW recruitment, hiring, training, supervision and career supports such as are described in the nationally endorsed [CHW Core Consensus](#) project. Further many of these groups do not apply guiding CHW policies from the [American Public Health Association](#) that articulate CHWs' capacity to lead the design and implementation of workforce training and certification policy and decision-making.

More than one year into the pandemic, tens of millions of Americans are being victimized by a COVID-19 [recession](#) (hunger, housing and employment hardships), [governors are calling for increased testing, contact tracing and public health measures](#), and pressure is mounting for [racial equity in vaccine development and distribution](#). Now is the time to identify CHWs as a [trusted and skilled workforce](#), with experience responding to infectious disease pandemics like HIV and natural disasters like Hurricane Katrina, to join this national fight and to scale up America's readiness for future pandemics. We invite legislators, public and private institutions, funders and providers to meet this challenge and maximize opportunities to highlight the indispensable work CHWs are doing now (and have been doing for decades) to secure a sustainable future for the workforce.

nachw.org

CHW DOCUMENT RESOURCE CENTER (DRC)

DRC USERS BY TYPE



A Database for CHW Leaders, State and Local Government Practitioners, Employers and Payers. This is the nation's largest searchable collection of documents on policies around CHWs (mainly on the state level). Documents include: reports, policy studies, meeting minutes, brochures, state legislative bills and other materials that show how state-level groups have created definitions, policies and workforce development programs for CHWs.

Visit the [DRC](#) and start searching today!

The CHW Document Resource Center was developed in collaboration with National Association of Chronic Disease Directors (NACDD) and the Centers for Disease Control Division of Chronic Disease Prevention and Health Promotion.

National Community Health Worker Awareness Week (NCHWAW)

Unity Conference 2023 NCHWAW Plenary Session: A powerful panel discussion among CHWs and allies focused on the importance of CHW workforce visibility, Experiences, resources and strategies mobilize the workforce and our allies.

**** AUGUST 28 – SEPTEMBER 1, 2023 *****

National participation in NCHWAW:

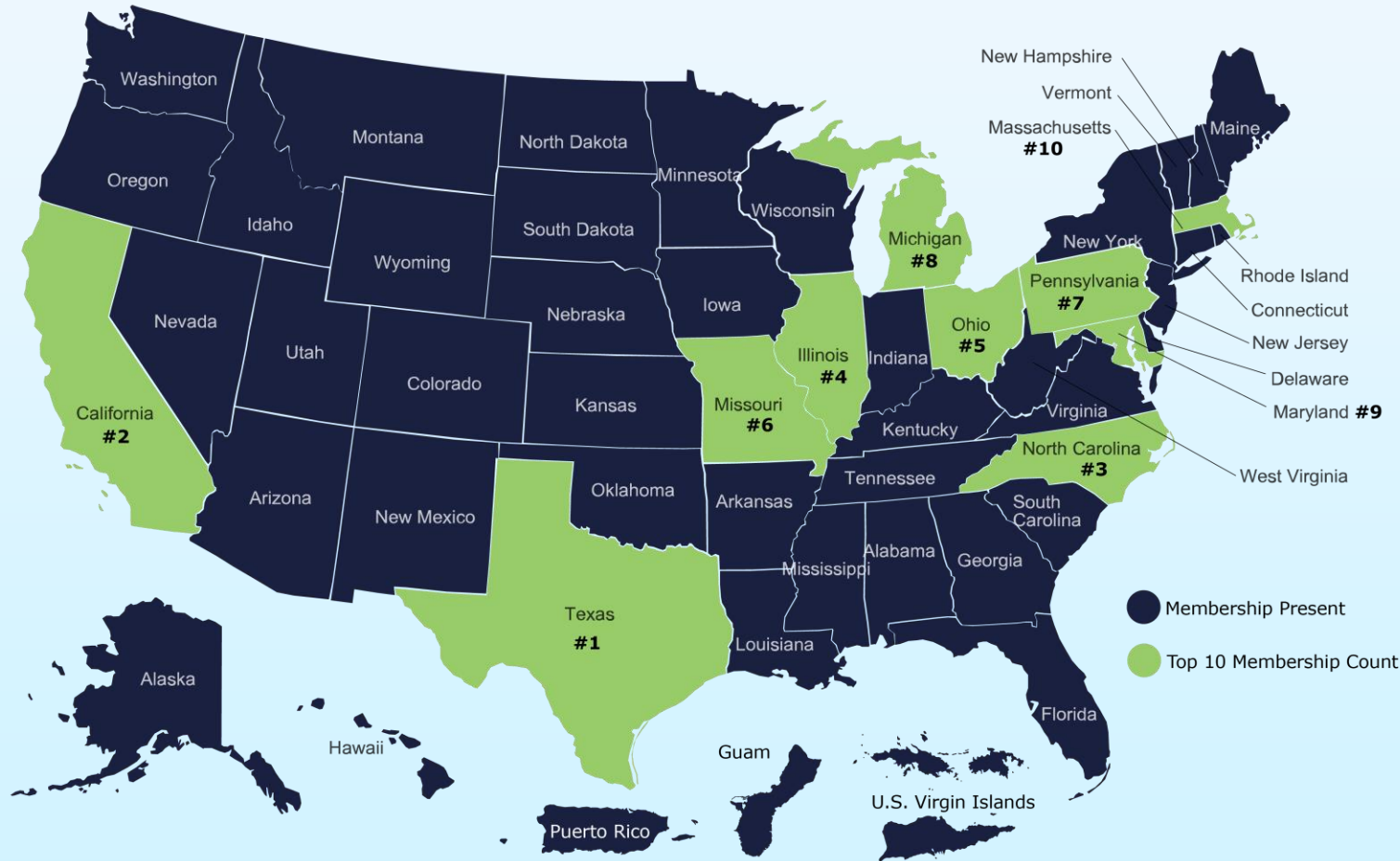
- 78 participating organizations
- Community Based Organization in 17 states
- 82 events, meetings, and other activities during the week
- 1 international event in Mumbai, India hosted by *Mahatma Gandhi Mission Institute Of Health Sciences*.
- Individual CHWs & allies used the resources within the NCHWAW toolkit and sent letters to their lawmakers
- Active social media presence of CHWs & allies who shared graphics and promoted NCHWAW widely



The graphic features a central white circle with a double white border. The background is composed of several overlapping geometric shapes in teal, purple, dark blue, and lime green. The text 'NACHW' is positioned above 'Membership', both in a bold, blue, sans-serif font.

NACHW
Membership

NATIONAL MEMBERSHIP: 50 STATES AND GROWING!



Our members (CHWs, including promotoras and community health representatives) are working across sector, ethnicity, and geography to address direct service needs of special populations as well as the upstream social determinants of health.

NACHW continues to learn about its members, using member data to better understand and serve the workforce. This data helps us tailor monthly webinars, identify relevant opportunities, and remain at the forefront of issues that pertain to CHWs.

CHW AND ALLY INDIVIDUAL MEMBERSHIP BENEFITS

**CHW
Individual
Membership
\$20 a year**

**Ally
Individual
Membership
\$50 a year**

- Joining board committees
- Read and share our NACHW Member's Only Newsletter
 - Including curated funding announcements
- Member's Only Webinars and resources
- Certificates of Attendance for select webinars
- *New: Member directory to connect with other CHWs!*
- Discounts to the Unity Conference
- Applying to be a NACHW ambassador!
- Submit events and stories to our newsletter!
- Dedicated space in Memberclicks to store continuing education credits
- And so much more!



VISIT OUR [MEMBERSHIP PAGE](#) AND DOWNLOAD RESOURCES

NACHW Webinar: Celebrating Our Five-Year Anniversary and Envisioning the Future



CELEBRATING 5 YEARS OF NACHW!

NACHW invites you to join us as we celebrate our 5th anniversary! We will talk about our beginnings and the vision we have for NACHW's future.

 **APRIL 24TH**
3:00-4:30 PM EST

This webinar is open to everyone!

REGISTER NOW

 More Information :
WWW.NACHW.ORG



NACHW invites you to join us as we celebrate our 5-year anniversary! Five years ago, our founders came together at the 2019 Unity Conference to create the National Association of Community Health Workers (NACHW). Learn about the history of NACHW, some of our major accomplishments in the last 5 years, and about our strategic plan moving forward.

Live-Spanish translation available.

April 24th 3:00-4:30pm EST

[Register here!](#)

Become a NACHW Ambassador: OPEN CALL 2024



Join us in making a difference! NACHW is seeking passionate individuals to serve as State Ambassadors.

- Embrace diversity and inclusion by representing your community, regardless of background or language.
- Immigrant applicants and bilingual speakers are encouraged to apply!
- Together, let's empower voices and advocate for equitable healthcare access.
- Apply now and be the catalyst for positive change in your state!

[Learn more about our current ambassadors here!](#)

Apply HERE! By May 15th



**Partner and
Stay in
Touch!**

GET THE LATEST NACHW NEWS



mailchimp

Sign up to stay up to date!

your@email.com

Sign up on our homepage (www.nachw.org) to receive our monthly newsletter, COVID-19 newsletter, and other communications



Follow us at @chwnational

Linked



Find us at

[Linkedin.com/company/chwnational](https://www.linkedin.com/company/chwnational)



Thank You

Info@NACHW.org

www.NACHW.org

